

# IndeXExploit

**IndeXExploit** is a Microsoft Word add-in for creating, editing and using embedded Word indexes. It complements the Microsoft Word indexing module and is designed for use by indexers, authors, editors and general Word users.

When used with Acrobat it can 'hyperlink' from a page number in an index to the PDF page.

A flow diagram, Figure 1, shows how the elements of IndeXExploit work together with Word.

## Configuration (4.1)

Configuration is used to enter licence details and select between Word and PDF operation.

## Word Functionality

### Options (4.2)

The options dialog controls highlighting, bookmarking, autocreate headings, sort rules, index options, picklist options and export.

### Bookmark (4.3)

The Bookmark dialog complements the Word Bookmark dialog. It checks that a bookmark is unique before allowing the user to index the range and includes index entry fields allowing a bookmark to be created and indexed using one dialog. The dialog remains available during indexing. The entry information can be used to find the Word index entry and any XE fields.

### Mark Entry (4.3)

The Mark Entry dialog complements the Word mark entry dialog. In addition to core functions it can find un-indexed bookmarks created using Bookmark. The search facility gives the indexer control when indexing and includes regular expressions.

### AutoMark (4.9)

Highlighted text triggers in the Word file are appended to a selected AutoMark file. This can be adjusted and used to automatically insert index entries using Word AutoMark. IndeXExploit can remove all insertion point XE fields allowing multiple AutoMarks until a satisfactory index is produced.

### Index (4.5)

Index parses embedded entries and creates a Picklist that behaves like a hyperlinked index. It can create a picklist for the whole document or part of the document. A Word index can be synchronized with the partial picklist.

Options include.

- Include/exclude page numbers
- Check structure of embeds
- Check cross references

### Adjust (4.6)

Options include

- Re-arrange index using a stop word list.
- Choose characters to prevent re-sort
- Turn insertion point embeds into range embeds
- Move XE fields close to referenced ranges
- Change bookmark prefixes and update referencing XE fields
- Delete all XE fields and referenced bookmarks.

### Picklist (4.6)

The Index picklist behaves like a hyperlinked index. The Word index entry can also be found. The range for an embed can be altered and the selected embed can be edited using Word's features.

### Export (4.7)

An embedded index can be exported and then imported into an indexing program via IndexConvert.

## PDF Functionality

IndeXExploit is able to use page numbers in an index or contents list in a Word file to navigate to that page in a PDF. IndeXExploit works with an appropriate version of Acrobat to provide this capability.

For a single PDF, on selection of Goto, IndeXExploit will go to the selected page number in the PDF.

For multiple PDFs, on selection of Goto, IndeXExploit first works out which PDF to use by reading a user defined document list, it then goes to the selected page.

Page offset values are available to cater for PDFs containing prelims. Arabic and Roman (up to 1/50) are supported. For multiple PDFs, chapters and volumes are supported.

## Compatibility

IndeXExploit for Word embedded indexing has successfully run on PCs and will run on Macs using Parallels or Word for Macintosh. PDF functionality is new. It has been successfully tested on several versions of Word on PCs using Acrobat DC Pro.

## Support

A user guides can be downloaded at [www.indexbase.co.uk](http://www.indexbase.co.uk)  
For further information and downloads see

<http://www.indexbase.co.uk>

Or email [enquiries@indexbase.co.uk](mailto:enquiries@indexbase.co.uk)

# IndexExploit

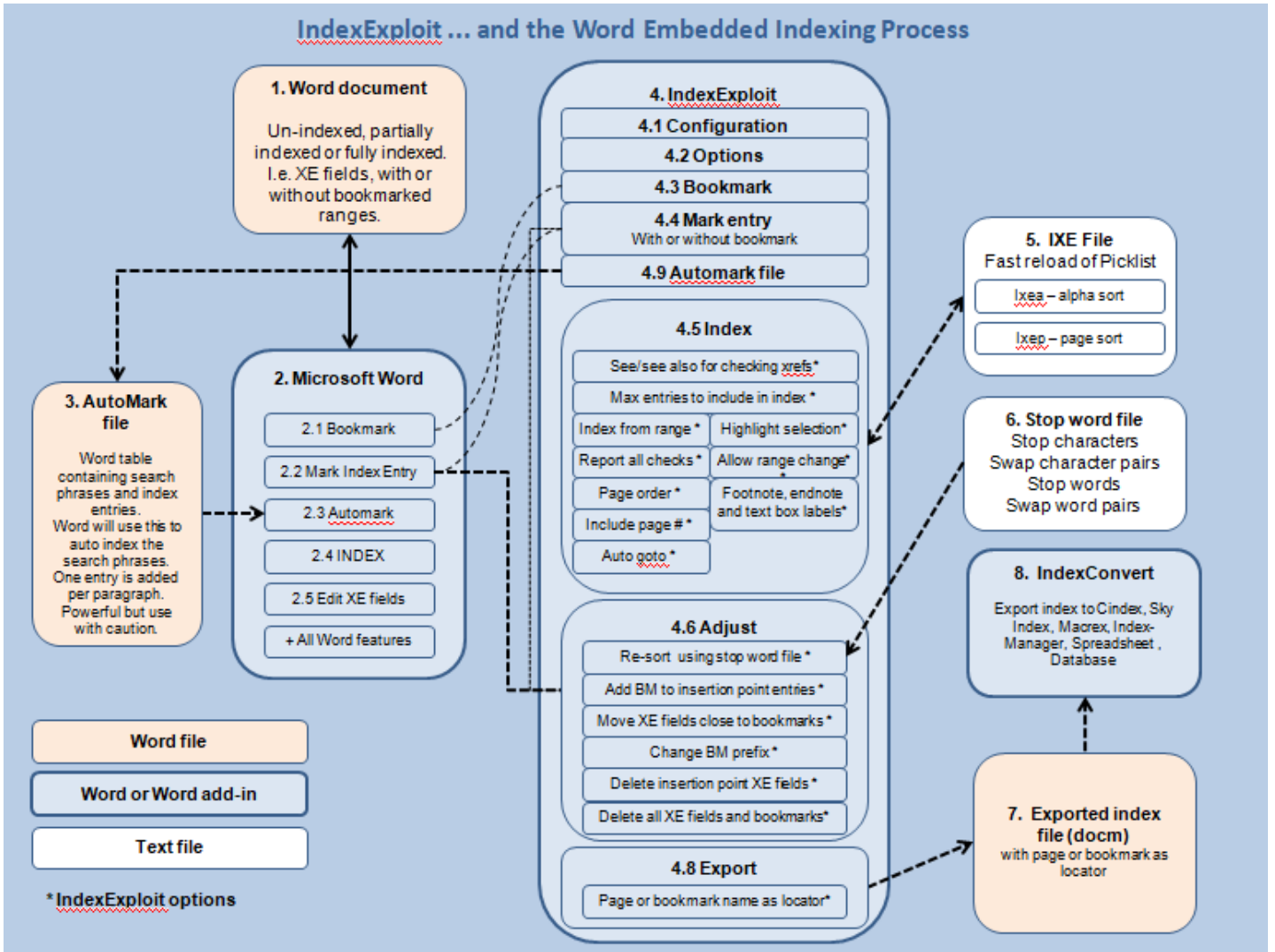


Figure 1 Process using IndexExploit with Word Files

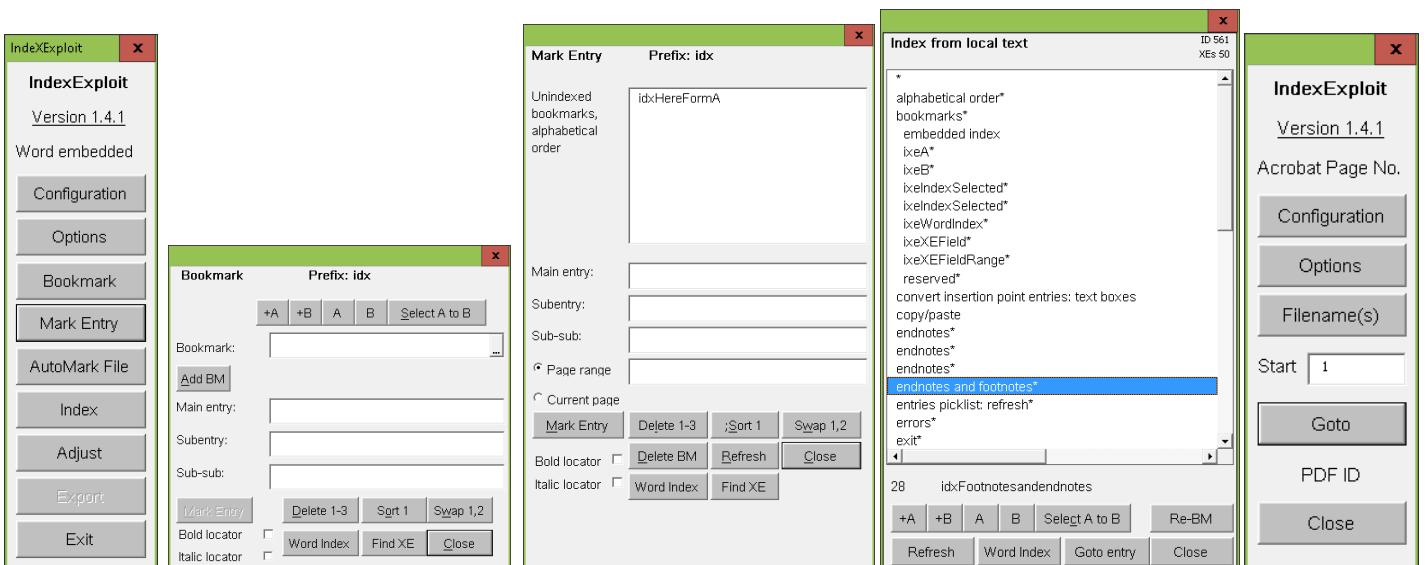


Figure 2 IndexExploit Dialogs